

1. Product Package

- WNAP -6300 x 1
- Pole Mounting Ring x 1
- AC Power Adapter & PoE Injector x 1
- Quick Installation Guide (QIG) x 1
- Product CD (User's Manual & QIG included) x 1



If any of them are not included or damaged, please contact your local vendor for support.

2. Installation Precautions

1. Users **MUST** use a proper and well-installed surge arrestor and grounding kit with WNAP-6300; otherwise, a random lightning could easily cause fatal damage to WNAP-6300. **EMD (Lightning) DAMAGE IS NOT COVERED UNDER WARRANTY.**
2. Users **MUST** use the "AC Power Adapter & PoE Injector" shipped in the box with the WNAP-6300. Use of other options will cause damage to the WNAP-6300.
3. Users **MUST** power off the WNAP-6300 first before connecting the external antenna to it; otherwise, damage might be caused to the WNAP-6300 itself.

- 1 -

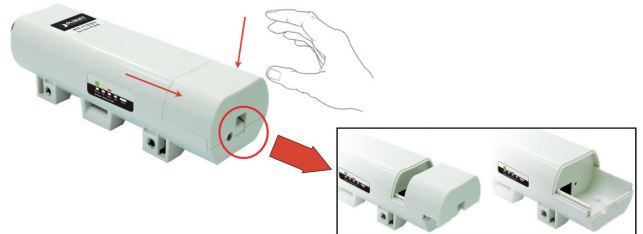
3. Slide the cover back to seal the bottom of the WNAP-6300. When finished, you can check the connection as the figure below. Be reminded, the UTP wire distance toward your WNAP-6300 to the Ethernet devices, such as Ethernet Switch, is 100 meters, the passive POE injector can be in any point of this 100 meters UTP distance where there is a shell or protected location.



- 3 -

3. System Installation

1. The bottom of the WNAP-6300 is the movable cover. Grab the cover by pressing the push bolt and pull it out as the figure shown below.



2. Plug a standard Ethernet cable into the RJ45 port.

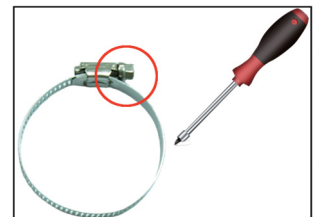


- 2 -

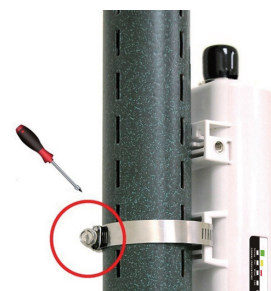
4. Turn the WNAP-6300 over. Put the pole mounting ring through the middle hole of the WNAP-6300.



Unlock the pole mounting ring by a screw driver before putting it through the WNAP-6300 as the bottom right picture shows.



5. Mount the WNAP-6300 steadily to the pole by locking the pole mounting ring tightly.



- 4 -



150Mbps | **802.11n Outdoor Wireless CPE**
 WNAP-6300 | The MIMO Technology, Faster in speed, Wider in coverage



Quick Installation Guide

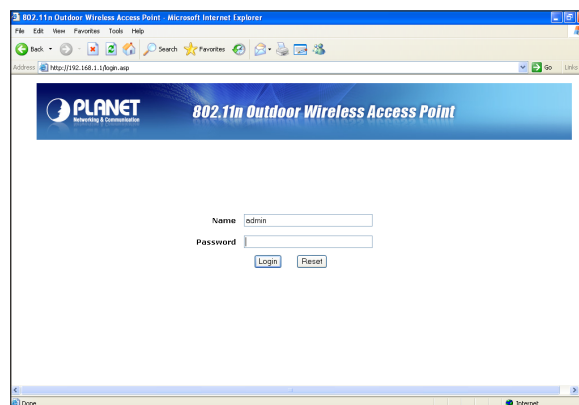
6. Successful installation.

Please refer to the User's manual in CD-ROM for more information about how to use the external antenna with the N-type connector to the WNAP-6300.

4. Configuration

Connect the WNAP-6300 with your PC by an Ethernet cable plugging in LAN port of PoE injector in one side and in LAN port of PC in the other side. Power on the WNAP-6300 by PoE from PoE injector.

1. Assign a static IP address to your PC which should be in the same network segment with the WNAP-6300. As the default IP address of the WNAP-6300 is **192.168.1.1**, you may choose from 192.168.1.2 to 192.168.1.254. Then click **OK**.
2. Open the web browser on your PC, key in the IP address (**192.168.1.1**) of the WNAP-6300 in the address bar, and then enter.
3. Now, you will see the log-in page of the WNAP-6300. The default username and password are both "**admin**". Enter them and then click **Login**.



Please refer to the User's manual in CD-ROM for more information about how to set each mode after successful log-in.