

With a firstboot of the GWR Router, product has the default ip address 192.168.1.1. In order to connect with the network of the mobile operator, you must complete the following steps:

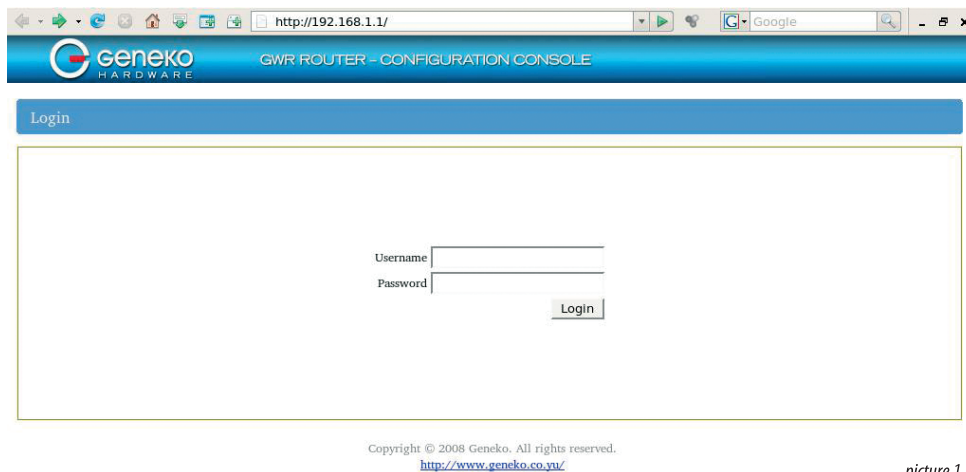
- set the WAN parameters of the connection
- activate the WAN connection
- set the network parameters on your localhost

In order to use the GWR Ruter, you must connect your localhost/PC and the GWR Ruter with a ethernet cable.

When this is completed, you can connect with the web interface of your GWR Router by entering <http://192.168.1.1> in your favorite web browser.

Your localhost must be configured with one of the IP address from 192.168.1.0/24 address range.

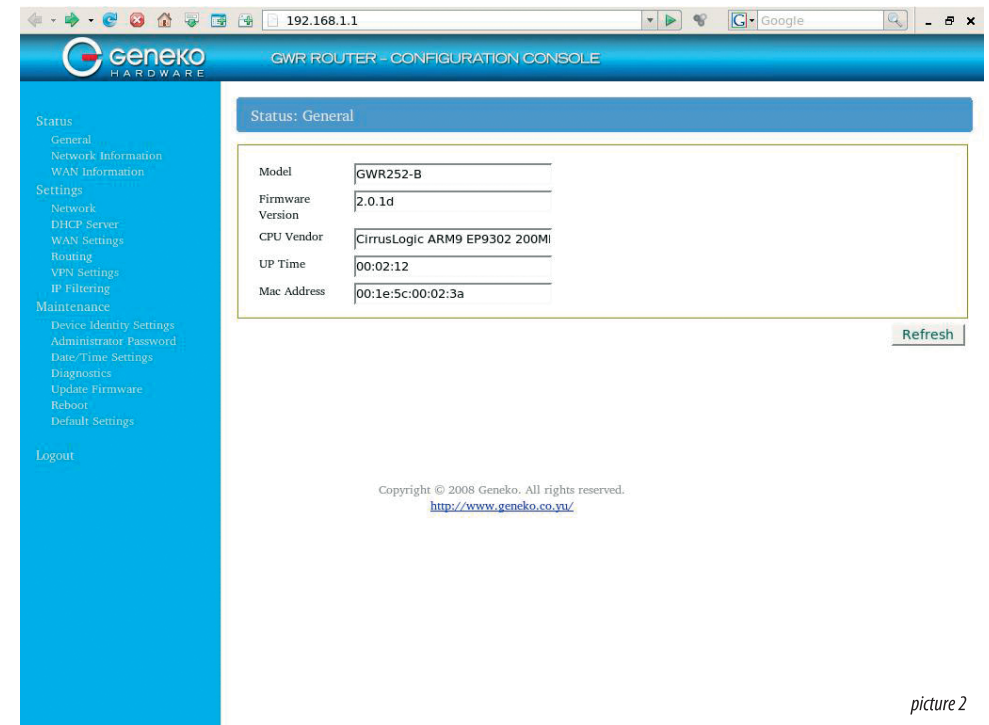
After a few seconds, the following screen will appear (picture 1.)



picture 1

By entering the default username and password **admin/admin**, the configuration application will be **lunched**.

The first screen after the application is launched is shown on picture 2.



picture 2

To set the WAN parameters select the **WAN settings** in the Settings menu on the left (picture 3).

On this screen you need to enter the following parameters in order to connect to your mobile operator:

- name of the mobile operator
- authentication protocol PAP-CHAP/PAP/CHAP, you must obtain this parameter from your mobile operator
- username/password, also from your mobile operator
- APN parameter, also from your mobile operator

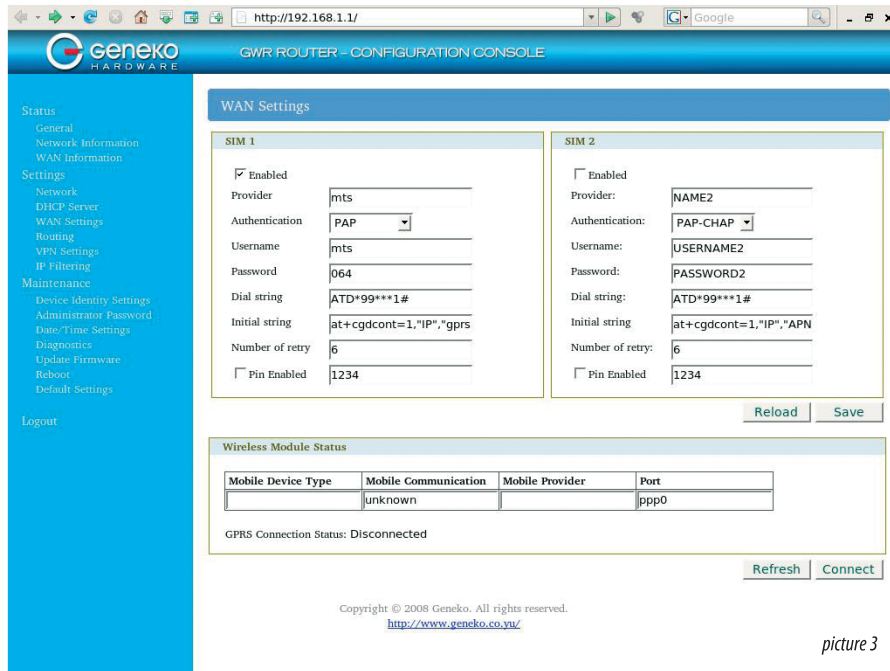
The APN parameter must be entered in the Initial string field. In rare cases, this string field must be changed completely, but in the most cases just the last parameter "APN" must be changed. Consult your mobile operator.

The Dial string field is also in the most cases unchanged but contact your mobile operator for details.

When all this is done, you must click on the Save button, and after a few seconds you must click on the Connect button in order to initialize a connection to your mobile operator.

After a 30 seconds, if all of the parameters are entered corectly, a connection to the mobile operator will be established.

The LED indicators on the upper side of the router will be in the still state if the connection with the mobile operator is successfully established.



picture 3

In order to use the GWR router with your localhost to connect to the network of the mobile operator, you must enter the network IP address of the GWR router in the default gateway field of localhost and any other localhost in the LAN.

For any other informations about the GWR router, please see the GWR Series Router - User Guide document on the supplied CD.

# GWR series

GWR201  
GWR251  
GWR301

GWR202  
GWR252  
GWR302

QUICK USER GUIDE