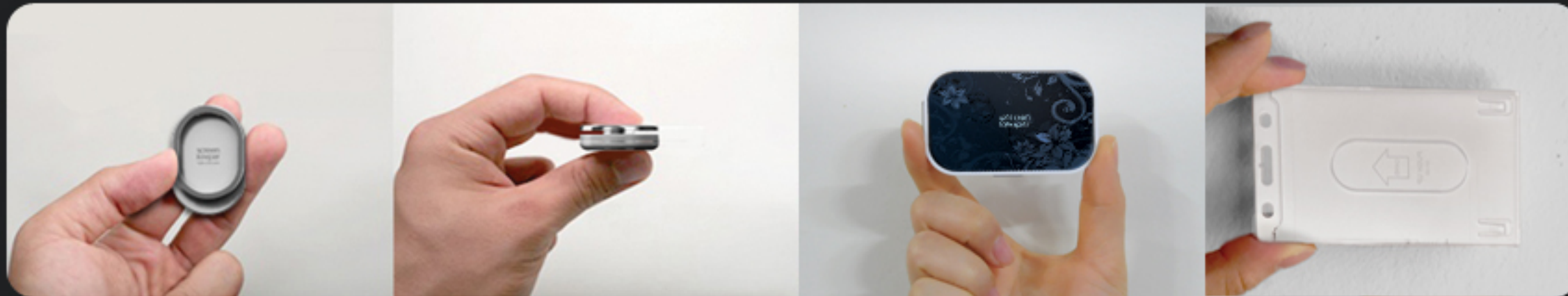


GUIDE TO S/W INSTALLATION

MONITOR'S SECURITY+ENERGY SAVING!

Eco-friendly power switch off of your computer monitor and also screen lock while you are away from the computer automatically. It is depending on the position and also surrounding interference between the USB dongle and its Remote.



CATEGORY

PROTECT THE **"PRIVACY"** OF YOUR COMPUTER MONITOR

Automatically closes your monitor's screen while you're away from your computer. And immediately opens your screen as soon as you get back to pc. Your private and confidential information shall be kept by screen keeper

- 01 *How to connect Screen Keeper web site and Program Download*
- 02 *How to install and execute Screen Keeper Installation Program*
- 03 *How to operate Screen Keeper*
- 04 *How to set Screen Keeper Options*

Cool and attractive metallic combination!

Automatically closes your monitor's screen while you're away from your computer. And immediately opens your screen as soon as you get back to pc. Your private and confidential information shall be kept by screen keeper

PART1. HOW TO CONNECT SCREEN KEEPER WEB SITE AND PROGRAM DOWNLOAD

PROTECT THE "PRIVACY" OF YOUR COMPUTER MONITOR

Automatically closes your monitor's screen while you're away from your computer. And immediately opens your screen as soon as you get back to pc. Your private and confidential information shall be kept by screen keeper.



Setup Program

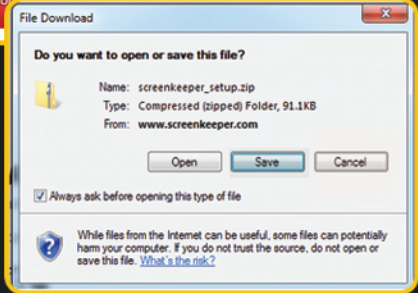
Manual

S/W Install Guide

FAQ

Note: For end user who has a non battery replaceable model of SK-01, it is recommended to select min. 5 sec. for 'Lead time for Screen Lock' in the menu of 'Option'.

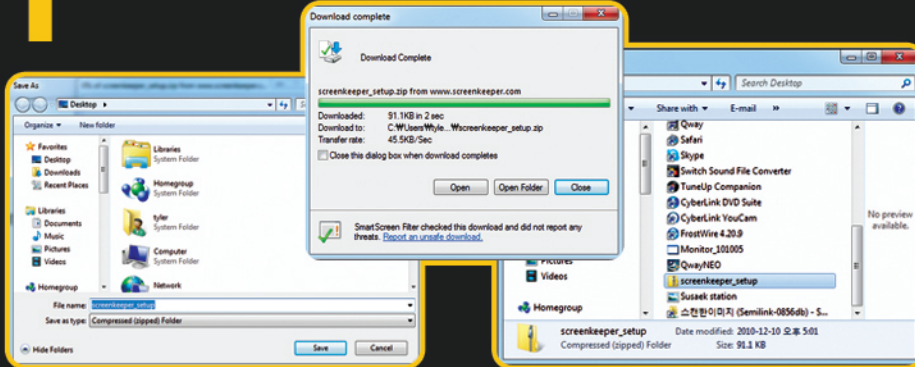
2 Click the 'Download setup.exe' in the middle



3

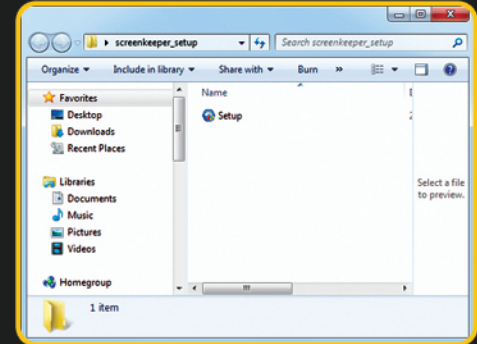
Click the 'Store'

1 Visit www.screenkeeper.com



4 Appoint the place where you want to store the file and click the 'Store'

5 Decompress the file which is being stored

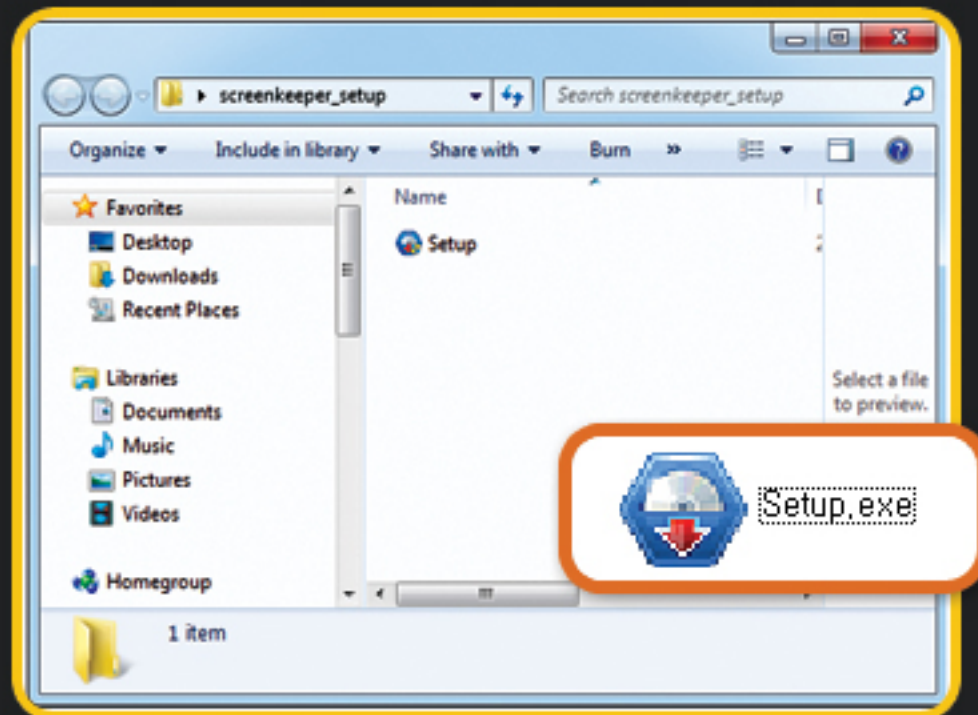


6 Double click the 'Setup' file and install it

PART2. HOW TO INSTALL AND EXECUTE SCREEN KEEPER INSTALLATION PROGRAM 01

PROTECT THE "PRIVACY" OF YOUR COMPUTER MONITOR

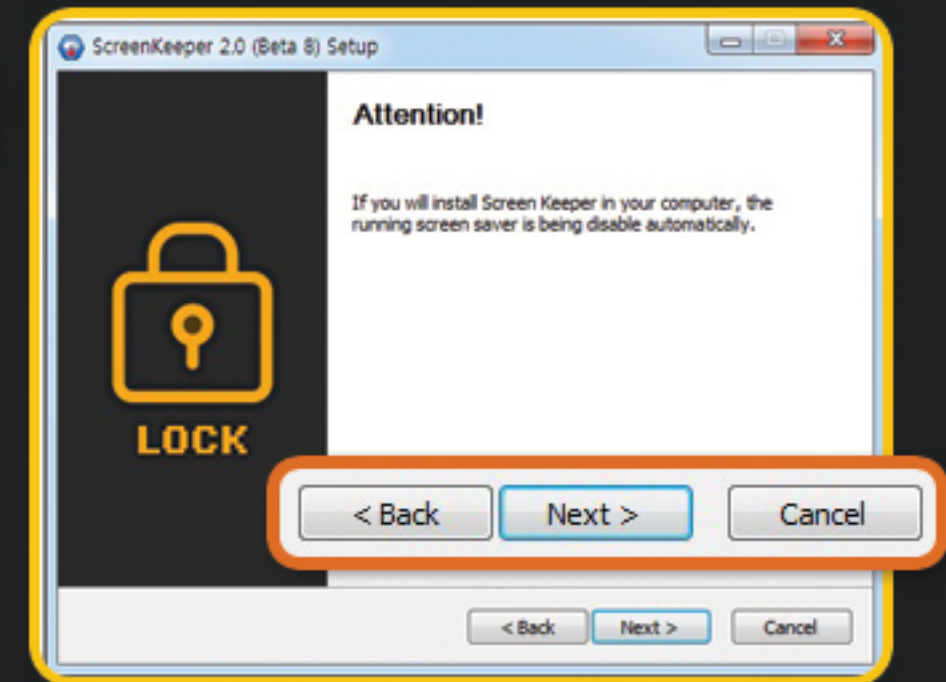
Automatically closes your monitor's screen while you're away from your computer. And immediately opens your screen as soon as you get back to pc.
Your private and confidential information shall be kept by screen keeper



1 Execute the 'Setup.exe' of Screen Keeper Installation Program



2 Click the 'Next' in the bottom line



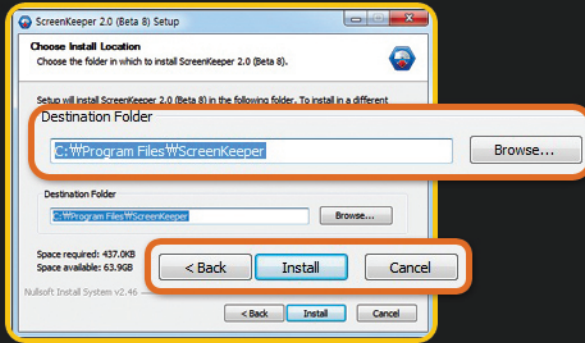
3 Click the 'Next'

PART2. HOW TO INSTALL AND EXECUTE SCREEN KEEPER

INSTALLATION PROGRAM 02

PROTECT THE "PRIVACY" OF YOUR COMPUTER MONITOR

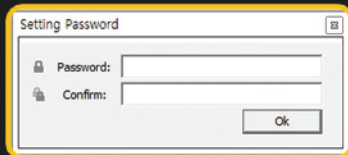
Automatically closes your monitor's screen while you're away from your computer. And immediately opens your screen as soon as you get back to pc. Your private and confidential information shall be kept by screen keeper.



4 Appoint the place where you want to install and click the 'Install'



5 Click the 'Finish' to complete the installation



6 Enter your password with 4~8 digits alphanumerically and confirm it by enter your password one more time in the box the Confirm then click the 'OK'



7 Check the Screen Keeper I-cone in the bottom tray of screen

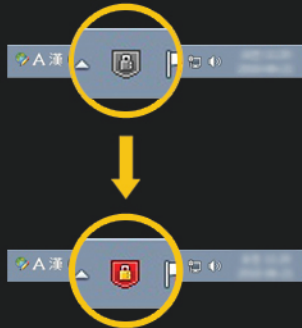
PART3. HOW TO OPERATE SCREEN KEEPER 01

PROTECT THE "PRIVACY" OF YOUR COMPUTER MONITOR

Automatically closes your monitor's screen while you're away from your computer. And immediately opens your screen as soon as you get back to pc. Your private and confidential information shall be kept by screen keeper.



1 Insert the Screen Keeper's USB dongle into USB port of your PC after finish of the file installation



2 Check the change of Screen Keeper's I-con color from gray to red. If the I-con color didn't be changed to red, try to use another USB port.

Note: It is recommended to use the USB port in the main PC.



3 Check the display of lock screen of Screen Keeper as an alarming of program running of Screen Keeper's security

I HAVE A UNIQUE SOLUTION

Automatically closes your monitor's screen while you're away from your computer. And immediately opens your screen as soon as you get back to pc. Your private and confidential information shall be kept by screen keeper

www.screenkeeper.com

PART3. HOW TO OPERATE SCREEN KEEPER 02

PROTECT THE "PRIVACY" OF YOUR COMPUTER MONITOR

Automatically closes your monitor's screen while you're away from your computer. And immediately opens your screen as soon as you get back to pc. Your private and confidential information shall be kept by screen keeper



4 Power switch on the Remote of Screen Keeper



5 The lock screen of security alarming will be paused and the screen lock will be released



6 The Screen Keeper I-con in the bottom tray of PC will blink shortly and will express the status of Screen Keeper running

I HAVE A UNIQUE SOLUTION

Automatically closes your monitor's screen while you're away from your computer. And immediately opens your screen as soon as you get back to pc. Your private and confidential information shall be kept by screen keeper

www.screenkeeper.com

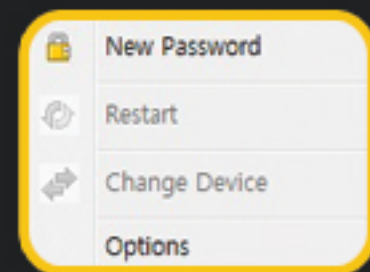
PART 4. HOW TO SET SCREEN KEEPER OPTIONS

PROTECT THE "PRIVACY" OF YOUR COMPUTER MONITOR

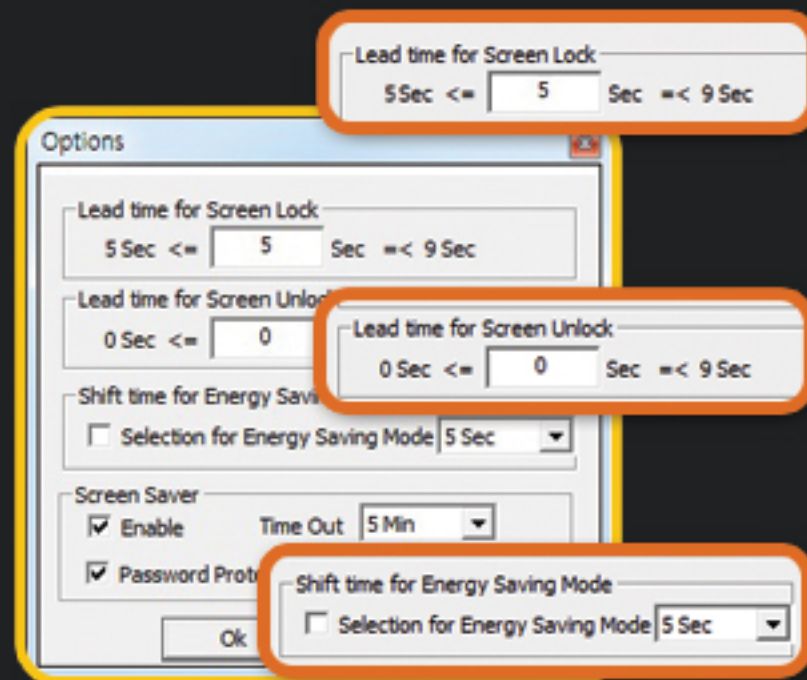
Automatically closes your monitor's screen while you're away from your computer. And immediately opens your screen as soon as you get back to pc. Your private and confidential information shall be kept by screen keeper



1 There is Screen Keeper icon in the right side of bottom tray of your PC screen. Right click the icon, and the small window will pop up on the right side.

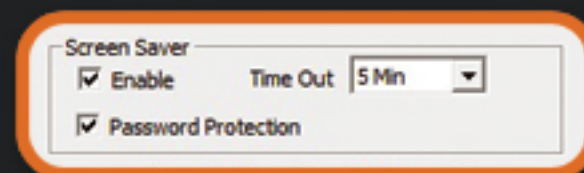


2 NEW PASSWORD
It is the useful feature when your password is disclosed. You are able to change the Password to new one whenever you need it. The Pop-up of Password will appear if you click the 'New Password'. Enter your existing password first then input new password you prefer.



3 RESTART
It is a convenient feature when you want to operate the Screen Keeper again after you release its lock screen by enter your password. Just click the "Restart" command, and full functions will return.

4 CHANGE DEVICE
It is for the case you buy new pair of Screen Keeper and register it again in your P/C. You need to make sure to delete old Screen Keeper both USB dongle and Remote and use the pair of new Screen Keeper its USB dongle and Remote at all.

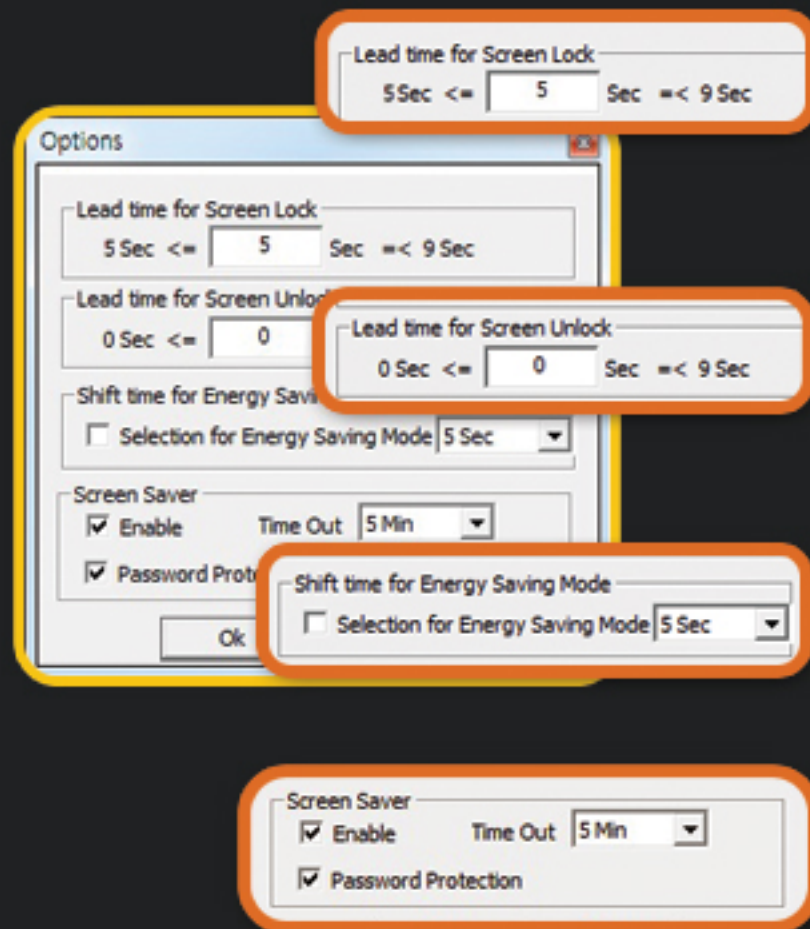


5 LEAD TIME FOR SCREEN LOCK
In case, there is unwanted interruption or lock the screen while you are using the Screen Keeper, it is required to adjust the lead time 5 or 7 or 9 sec according to the interruption you have. Its default is 5 sec.

PART 4. HOW TO SET SCREEN KEEPER OPTIONS

PROTECT THE **"PRIVACY"** OF YOUR COMPUTER MONITOR

Automatically closes your monitor's screen while you're away from your computer. And immediately opens your screen as soon as you get back to pc. Your private and confidential information shall be kept by screen keeper



6 LEAD TIME FOR SCREEN UNLOCK
It is time set for how long time takes to release the lock screen when you back to the P/C. If you want to check the process of screen change from its lock to release by yourself, it will be required for you to choose longer lead time. Its default is 0 sec.

7 SHIFT TIME FOR ENERGY SAVING MODE
It is a lead time how long time after its monitor goes to power switch off from the screen lock by Screen Keeper. There are 5 steps 5 sec, 30 sec, 5min, 15min, or 30min. You can choose any one of lead time you prefer according to your P/C environment.

8 SCREEN SAVER MODE
It is a feature that the screen is to be locked after passing a certain time while your P/C is idle status referred to you release the lock screen with its password. Although its default time is 5 min, you are able to change it. It's operating is independent without correlation with screen saver of OS. When you are use both solutions of Screen Saver, OS's and Screen Keeper's at the same time, its screen will display the latest operated Screen Saver. In case Screen Saver Of OS, its screen is unable to return to normal according to your position. Hence, it is recommended for you to use the Screen keeper's Screen Saver rather than the Screen Saver of OS.

I HAVE A UNIQUE SOLUTION

Automatically closes your monitor's screen while you're away from your computer. And immediately opens your screen as soon as you get back to pc. Your private and confidential information shall be kept by screen keeper

www.screenkeeper.com

SCREEN
KEEPER

GUIDE TO S/W INSTALLATION



MONITOR'S SECURITY+ENERGY SAVING!

Eco-friendly power switch off of your computer monitor and also screen lock while you are away from the computer automatically.
It is depending on the position and also surrounding interference between the USB dongle and its Remote.

