

# P1127E-871

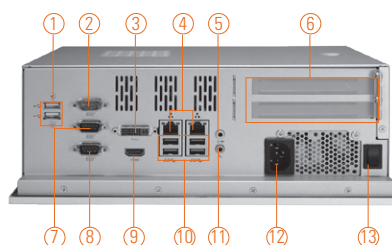
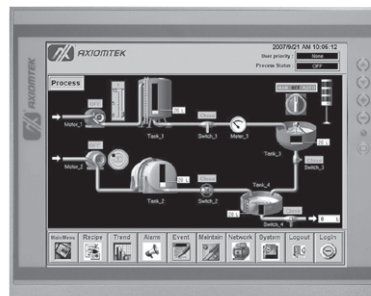
12.1" XGA TFT Expandable Industrial Touch Panel Computer with 3rd Gen Intel® Core™ i7/i5/i3, Celeron®, Pentium® & Xeon® Processor, 2 PCIe or 2 PCI Slots

## Features

- 12.1" XGA TFT LCD display
- LGA1155 socket 3rd gen Intel® Core™ i7/i5/i3, Celeron®, Pentium® & Xeon® processor
- Intel® C216 chipset
- Less screw design for easy installation
- 4 USB 3.0, 2 USB 2.0 and 3 COM ports
- Two PCIe or PCI expansion slots
- Built-in speakers and optional Wi-Fi 802.11 b/g/n module
- Robust aluminum with IP65 compliant front bezel design



▲ Side view



- |                                 |   |                             |
|---------------------------------|---|-----------------------------|
| 1. USB 2.0 x 2                  | 6. PCIe x8 x 2 or PCI x2                | 10. USB 3.0 x 4             |
| 2. COM 3 with 5V & 12V (RS-232) | 7. COM 1 with 5V & 12V (RS-232/422/485) | 11. Audio (Mic-in)          |
| 3. DVI-I                        | 8. COM 2 (RS-232)                       | 12. AC plug                 |
| 4. Ethernet x 2                 | 9. HDMI                                 | 13. Switch for power on/off |
| 5. Audio (Line-out)             |   |                             |



## Introduction

The P1127E-871 is a multimedia 12.1" touch panel PC for kiosk application. It has a fashionable mechanism design and industrial-grade material front bezel which can avoid damage from chemical corrosion. To meet the demands of multimedia application, the P1127E-871 is powered by a high performance 3rd generation Intel® Core™ i7/i5/i3, Celeron®, Pentium® & Xeon® processors with the Intel® C216 chipset. It features three COM ports, two Gigabit LAN ports and up to 16GB memory of dual-channel DDR3 that delivers high computing capability for high performance-demanding applications. The industrial panel PC is most suitable for kiosk, factory and automation.

### Dual Monitor Display

If larger viewing area is desired, an additional display can be connected via the system's VGA or HDMI port to help enhance worker's productivity level.

### Expandable for 2 PCIe or 2 PCI

The P1127E-871 has 2 PCIe x8 or 2 PCI slots for expansion purpose. User can easily plug in standard half-size PCI or PCIe card for any requirement.

### Speaker and WLAN Antenna Supported

The P1127E-871 features built-in speakers for kiosk application to display multimedia content program. It also supports WLAN module antenna (optional) for wireless network connectivity.

### Friendly Less Screw Design

The P1127E-871 is designed with ease of maintenance in mind. There are only three screws on the back chassis, so that technicians can quickly remove the system's back cover with minimum effort.

## Specifications

Front Bezel	Aluminum w/ IP65/NEMA 4 rugged protection	
LCD Panel	Display Type	12.1" XGA TFT LCD
	Brightness	500 nits
	Resolution	1024 x 768 pixels
	Viewing Angle	160°/140°
Main System	CPU	LGA1155 socket 3rd generation Intel® Core™ i7/i5/i3, Celeron®, Pentium® & Xeon® processor
	Chipset	Intel® C216
	System Memory	2 x 204-pin DDR3-1333/1600 SO-DIMM, up to 16GB
	BIOS	AMI UEFI BIOS with OA 3.0 built
	Storage	1 x 2.5" SATA HDD
	Watchdog Timer	255 levels, 1~255 sec.

## Specifications

IO Connector	1 x RS-232 (COM 2) 1 x RS-232/422/485 with 5V & 12V (COM 1) 1 x RS-232 with 5V & 12V (COM 3) 1 x DVI-I 1 x HDMI 4 x USB 3.0 2 x USB 2.0 2 x 10/100/1000 Mbps Ethernet (Intel® 82579LM/82583V) 1 x Audio (Mic-in/Line-out)
Expansion Interface	2 x PCIe x8 or 2 x PCI
Touchscreen	5-wire resistive type Light transmission 79% 1 million activations (typical) at a single point
Power Supply	100 ~ 240 VAC, 270 W
Power Consumption	160 W
Dimensions	311.5 mm (12.26") (W) x 111.85 mm (4.4") (D) x 250 mm (9.84") (H)
Packing Dimension	510 mm (20.08") (W) x 190 mm (7.48") (D) x 540 mm (21.26") (H)
Weight(net/gross)	5 kg (11.02 lb)/7.1 kg (15.65 lb)
Environment	Operating temperature: 0°C ~ +45°C (+32°F ~ +113°F) Relative humidity: 10% ~ 90% @ 40°C, non-considering Operating vibration: 1.0G, 5-500Hz, random
Certificate	CE

## Ordering Information

P1127E-871 w/ PCIe	12.1" XGA expandable industrial touch panel computer with LGA1155 socket 3rd generation Intel® Core™ i7/i5/i3, Xeon®, Pentium® & Celeron® processor, resistive touch screen, 2 PCIe x8 slots and 100-240 VAC
P1127E-871 w/ PCI	12.1" XGA expandable industrial touch panel computer with LGA1155 socket 3rd generation Intel® Core™ i7/i5/i3, Xeon®, Pentium® & Celeron® processor, resistive touch screen, 2 PCI slots and 100-240 VAC

\* Specification and certifications are based on options and may vary.

## Optional Accessories

82211271000E	Wireless LAN kit
82211270060E	VESA & wall mount kit
E981604011	ATC10 (VESA arm clamp type)
E981604012	ATW10 (VESA arm wall mount)

## Optional OS Installation

Windows® XP/XPe
Windows® 7/8.1
Windows® Embedded 7/8



▲ Expandible design



▲ Less screw design

## Dimensions

