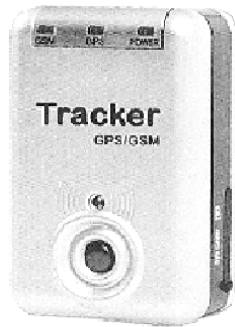


Tracker T200

GPS/ GSM

User Guide



Content

USER GUIDE	1
1 INTRODUCTION	3
2 FEATURE	4
3 GET STARTED	5
(3.1) Accessories	6
(3.2) Charge Battery	6
(3.3) Buy SIM Card	6
(3.4) Install SIM Card	6
4 OPERATION	7
(4.1) Fast Startup operation	7
(4.2) Authorized User's setting	7
(4.3) Usage	8
5 DISPLAYING LOCATION	11
6 SPECIFICATION	12

1 Application & Introduction:

Transportation : Locating the trucks

Car : Locating the missing car

Child care: Tracking the lost child

Elderly care : Dementia sufferers' and senior safety

Animal Tracking: Finding the missing pets location

Outdoor activities: Bike riding and hiking

T200 is a personal remote position device with built-in GPS and GSM/GPRS modules. It is a small size, high accuracy remote location tracking device. Based on GPS satellite , it provides accurate position information under dynamic conditions .

Personal remote position device transmit the longitude and latitude coordinate to authorized cell phone.

You can use these features for protecting and searching car, boat, Pet ,children and old persons. Further , you can use it as a security purpose and other purpose which needs remote positioning such as asset protection and animal tracking.

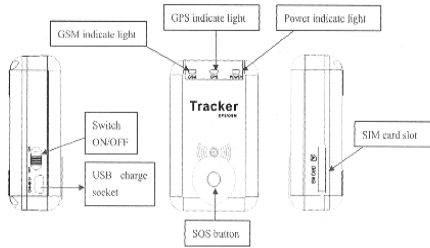
2 Feature.

- ◆ Build-in GPS personal locator.
- ◆ GSM /SMS communication or GPRS TCP/UDP connection. Support 900/1800/1900 MHZ. (Optional)
- ◆ 20 channels high sensitivity GPS Module
- ◆ Compact size, and smaller than one name card. Easy to hide
- ◆ Very Low power consumption, Standby time is more than 70 hours
- ◆ Fast Signal Acquisition
- ◆ Support single location and continuous tracking
- ◆ Support location triggered by tracker
- ◆ Support location triggered by authorized cell phone
- ◆ Support alarm and remote monitor
- ◆ Support quick dialing buttons for 4 preset phone numbers
- ◆ Support check location by SMS and Internet
- ◆ Locate the locator holder by the mobile phone via SMS
- ◆ SOS button send out exact location for immediate rescue/action.
- ◆ Geo-fencing to restrict movement to a defined radius.

3 Get Started

(3.1) Accessories

1. T200
2. Car charger with USB cable
3. Tool for inserting SIM card



4

(3.2) Charge Battery

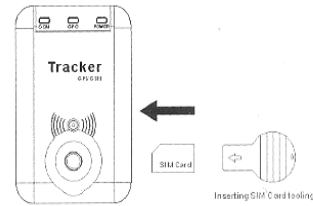
- ◆ The tracker is operated by its built-in and irreplaceable lithium polymer battery. The FULLY charged battery can supply power for the tracker for about 70 hours (in stand by mode).
- ◆ Do not remove, puncture or damage the battery or throw the battery into fire or water. The battery might burst, explode or release dangerous chemicals.
- ◆ Before you can use the T200, you must FULLY charge the battery by AC adapter or Cigarette car charger at least 3 hours under the power off condition.
- ◆ Charge state indicate:
Red light is on, it indicates that it is in charging.
Red light is off, it indicates that it already completed to charge.

(3.3) Buy SIM card

Buy SIM card from local service provider.

(3.4) Install SIM card

- ◆ Insert a Valid GSM SIM card into the "SIM Card" slot on the right of the tracker
- (Note: Use the given tool to push the SIM card into the slot and the SIM card will be locked automatically.)



5

4 Operation

4.1. Fast Startup Operation

- ◆ Place the tracker in an open area and push POWER key to switch on the tracker.
- ◆ The tracker starts to work within 10 sec.~ 20 sec. and to receive the GSM signals. When the tracker has GSM signals, the GSM indicator light will flash every second. If there is no GSM network, the GSM indicator light is off.
- ◆ While GSM is connecting with the network, the GPS starts searching for satellite signals. The GPS indicator light flashes every 2 seconds. When the GPS functions successfully, the GPS indicator light is on.
- ◆ When both GPS and GSM of the tracker work, you can use your mobile phone to dial to the number of the tracker to locate it.

4.2. Authorized User/s Setting

After you purchase the tracker, you should set the authorized user/s immediately.

Method to set authorized user/s

- Note that only four authorized users are allowed to set into the tracker. The codes of the authorized users are **SM1, SM2, SM3 and SM4** and they can be used according to your own choose. This means the first authorized user can be SM1 or SM2 or SM3 or SM4.
- The first user uses his mobile phone to send a SMS command to the tracker. He sends a SMS "SM1:xxxxxxxx," to the tracker. For example, if the mobile phone number is 123 456 789, the SMS will be: "SM1:123456789,". When the setup completes, the tracker will reply in a SMS "Set OK!" to the user's mobile phone, otherwise, it will reply a SMS "Set Fail!". Now he is the first authorized user of the tracker.
Please notice that the command must be write in **capital** and end with a **comma**
- Only the first authorized user can add the second authorized user by sending a SMS command to the tracker. For example, if the mobile phone number of the 2nd authorized user is 444 555 666, then the SMS is "SM2:444555666," to the tracker. The first and the second authorized users are now allowed to add the other authorized users. Repeat the same SMS command to set up the other authorized users.
- If a non-authorized user try to add an authorized user, the tracker will send a SMS "You

6

are not master!".

Method to delete the Authorized Users

- All four authorized users are allowed to delete the users of the tracker. Send a SMS "XX(USER CODE);," to the tracker. For example, if you want to delete authorized user SM2, then send a SMS "SM2;" to the tracker. When the deletion completes, the tracker will reply a SMS "Set OK!", otherwise, it will send a SMS "Set Fail!".
- If a non-authorized user try to delete an authorized user, the tracker will send a SMS "You are not master!".

[Hints] Make sure that the input of the mobile phone number are correct and the characters of the SMS command must be capitalized.

4.3. Usage

- When the tracker is switched on, it will send a SMS "Power ON!" to all authorized users.
- When the battery is low, the tracker will send a SMS "Low battery! Please charge!" to all authorized users.

4.3.1 Locate the tracker

The authorized user calls the tracker. It hangs off automatically and send out a SMS with position and time to his mobile phone. For example:-
SMS content:

```
Last located:  
Lat:22.654878  
Long:114.049636  
GPS:03 22  
Bat:50%  
http://www.tracker2map.com/?p=05776278b=1877800  
About 1-3 minute, the tracker receive the signal,  
Lat:22.654878  
Long:114.049636  
GPS:03 22  
Bat:50%  
http://www.tracker2map.com/?p=05776278b=1877800
```



[Hints] If a non-authorized dial to the tracker, the tracker will not respond to it.

- If the tracker cannot receive any GPS signal, the tracker will send a SMS with the last

7

location information. For example:-

SMS content:

Last located:
 Lat:22.654878
 Long:114.049638
 GPS:03 22
 Batt:50%
<http://www.tracker2map.com/m.php?m=0577627&b=1877800>

- To view the location of the tracker, the user can input the geographical information in the website <http://www.tracker2map.com>

4.3.2 Tracker reply in 30 or 60 seconds

In case of emergency, the authorized user can request the tracker to send him a SMS with location either every 30 or 60 seconds. For 30 seconds send a SMS "LL30,"; for 60 seconds send "LL60," to the tracker using his mobile phone. Once the setup completes, the tracker will send automatically a SMS every 30s, or 60s.

For example:-

SMS content: SMS NO: "" (**means the no. of SMS e.g. 001)
 Lat:22.654878
 Long:114.049638
 GPS:03 20
 Batt:50%
<http://www.tracker2map.com/m.php?m=0577627&b=1877800>

- To cancel this function, send a SMS "LC," to the tracker through his mobile phone. When the deletion completes, the tracker will send a SMS "Set OK!"; otherwise, it will reply a SMS "Set Fail!".

4.3.3 SOS Button

- The red button of the tracker is a SOS key. If the button is being pressed, the tracker will send out a SMS "Help!" with the geographical position to all authorized users.

Last located:
 Lat:22.654878
 Long:114.049638
 GPS:00 22
 Batt:50%
<http://www.tracker2map.com/m.php?m=0577627&b=1877800>

Help!
 Lat:22.654878

Long:114.049638
 GPS:03 22
 Batt:50%
<http://www.tracker2map.com/m.php?m=0577627&b=1877800>

4.3.4 Warning function setting

- The authorized user can set a "safety zone" for his object. The minimum distance is 20 meters and the maximum distance is 5 kilometers. If the object moves outside this designated safety zone, the tracker will send a warning to the user.
- Send a SMS command "SA**," via mobile phone to the tracker to set the distance and start the auto warning function. For example, if the user want to set a distance of 500 meters, the SMS command should be "SA500,"
- When the setting completes, the tracker will reply in SMS with "Set OK!"; otherwise, it will reply in SMS with "Set Fail!".

Move Warn Set OK!
 Lat:22.654878
 Long:114.049638
 GPS:03 20
 Batt:50%
<http://www.tracker2map.com/m.php?m=0577627&b=1877800>

- If a non-authorized person tries to use this function, the tracker will reply in SMS with "You are not master!".

[Hints] The default setting of the distance is empty.

4.3.5 Listen to the surrounding of the object (Optional function)

- This function is only available for the tracker with microphone.
- If the authorized user want to listen to the surrounding of the object, he can send a SMS "RC***," via his mobile phone to the tracker. For example, the mobile phone number of the authorized user is 123 456 789, the SMS command should be "RC123456789,,". The tracker will dial to this mobile phone number immediately.
- If a non-authorized person tries to use this function, the tracker will reply in SMS with "You are not master!".

4.3.6 Setting GPS working mode

Sent SMS "SS0(1,2,3)" by mobile phone to Tracker, and the default mode is 0.

SS0: can standby 72 hours; SS1: can standby 30 hours; SS2: can standby 100 hours; SS3:

no standby mode.

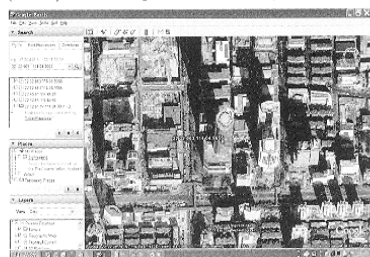
If set success, tracker will reply "Set OK!"; otherwise, it will reply "Set Fail!". To set with a non-authorized number, it will reply "You are not master!".

[Hints] The default setting is 0 mode.

5 Displaying location on map

- download google earth software from <http://earth.google.com/>
- Start the Google Earth software (For more information about Google Earth software, please refer to <http://earth.google.com/>) As following picture shows:

(Note ; Pay attention to change the Position Data Format)



Or you can start the Internet Explorer and type " <http://maps.google.com/> " to connect to Google Map website for displaying the location map.

- Enter SMS location link in the Mobile Phone (Make sure your Mobile have visited WAP Function).



6 Specification

GPS Module	20 Channels all in view tracking GPS module
Sensitivity	-158 db
Acquisition time:	Reacquisition < 0.1 sec • Hot Typically < 6sec Time To First Fix (TTFF) • Warm Typically < 35sec TTFF • Cold Typically < 45sec TTFF
Positioning Accuracy :	Less than 10 meters
•Frequency	Tri-band 900/1800/1900 MHz
•GSM Antenna	Internal GSM/GPRS antenna
•GPS Antenna	Internal active GPS antenna
•Operation time:	•With Battery alone: 70 hrs after fully charged; in standby mode
• Device Size:	44 x 63 x 24.5 mm
• Weight:	85g
•Operating Temperature:	-30°C to + 70°C
•Storage Temperature:	-40°C to + 85°C
•Relative Humidity:	5% to 95%, non-condensing