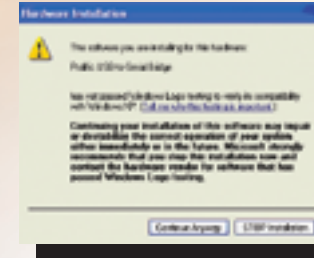
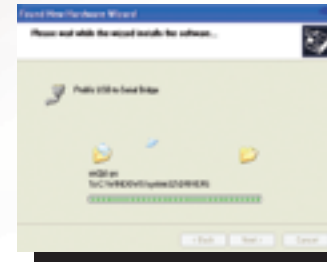


5. Click on Continue Anyway to continue the installation.



6. The system is now installing the driver.



7. Now the installation is finished. Click on Finish to leave the installation wizard. Step 2 to Step 7 will repeat until 8 ports of JetCon 2208 has all be installed.



2-2. Removing Your JetCon 2200

1. Insert the software CD-ROM into your computer.
2. Locate the file DRemover98_2k, and run this file to remove JetCon 2200's driver.
3. After the un-installation is finished, unplug your JetCon 2200 from your computer or USB hub.

3. Safety Approvals

FCC-Class B, CE-Class B

4. Words of Product Manager

USB interface

JetCon 2200 Series' USB interface supports USB 2.0, and is backwards compatible with USB 1.1/1.0, which allows the flexibility to use JetCon 2200 with any computer or notebook that come with USB ports.

Hassle-free Installation

Extending COM ports via a USB port can save you from opening the chassis, reconfiguring and rebooting your system. Imagine how simple and how easy this could be for you at work. JetCon 2200 not only allows you to easily extend COM ports, but also enables you to hot swap without powering on/off your computer.


Product VP Michael Teng

5. Korenix Customer Service

KoreCARE---KoreCARE is Korenix Technology's global service center, where our professional staff is ready to solve your problems at any time and in real-time.

Korenix global service center's e-mail is KoreCARE@korenix.com.

5-Year WARRANTY POLICY--- Each of Korenix's product line is designed, produced, and tested with high industrial standard. Korenix warrants that the Product(s) shall be free from defects in materials and workmanship for a period of five (5) years from the date of delivery provided that the Product was properly installed and used. This warranty is voided if defects, malfunctions or failures of the warranted Product are caused by damage resulting from force majeure (such as floods, fire, etc.), environmental and atmospheric disturbances, other external forces such as power line disturbances, host computer malfunction, plugging the board in under power, or incorrect cabling; or the warranted Product is misused, abused, or operated, altered and repaired in an unauthorized or improper way.



Quick Installation Guide

Content

Introduction

1. Introduction

- 1-1. Product Features
- 1-2. Package Checklist
- 1-3. Product Panel Layout
- 2. Installation
- 2-1. Installing Your JetCon 2200
- 2-2. Removing Your JetCon 2200
- 3. Safety Approvals
- 4. Words of Product Manager
- 5. Korenix Customer Service

Thank you for choosing Korenix JetCon 2200 Series RS-232 to USB Converter. Korenix JetCon 2200 Series RS-232 to USB Converter brings you a convenient way to extend 4 or 8 COM ports on your PC via an USB port. This easy plug-n-play solution enables you to hot swap the converter without the need to open chassis, reconfigure, or reboot, giving you hassle-free COM port expansion. JetCon 2200 Series comes with 2 models: JetCon 2204 4- and JetCon 2208 8-port RS-232 to USB Converters. With more PCs come with USB ports instead of COM ports, and RS-232 devices still occupy a great portion in some applications, such as point-of-sale, banking, mobile computing, and industrial automation, you need a cost-effective USB-to-Serial solution to help you extend COM ports on your PC. That's exactly where JetCon 2200 comes in. JetCon 2200 Series not only gives you the plug-n-play capability, but also allows you to hot swap without powering on/off your PC. And extending your COM ports via the USB port can relieve you from the need to open the chassis, reconfigure and reboot. And with USB 1.1 standard that is compatible with USB 2.0 and 1.0, you can be assured that JetCon 2200 can work with any PC or device with USB interface. JetCon 2200 also provides both USB bus and external power to give you flexible power supply connection.

1-1. Product Features

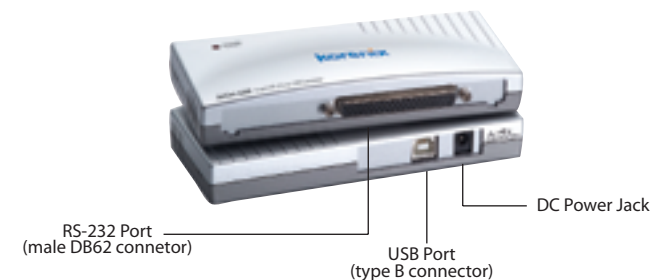
- ▶ Adds 4/8 RS-232 serial ports to PC or notebook over USB port
- ▶ Supports USB 2.0, and backwards compatible with USB 1.1/1.0
- ▶ Supports baud rate from 75 bps to 115.2 Kbps
- ▶ 512-byte deep FIFO
- ▶ Built-in 16KV ESD Surge Protection
- ▶ Supports Windows 98/Me/2000/XP/2003
- ▶ Supports both USB bus power and external power

1-2. Package Checklist

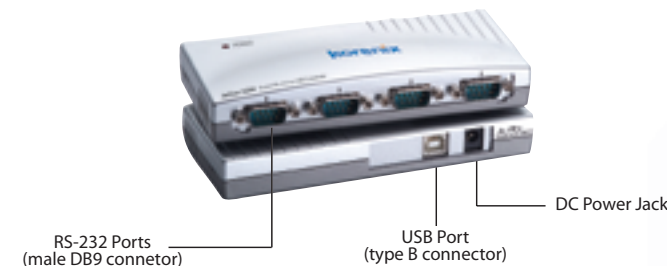
JetCon 2200 Series RS-232 to USB Converter is shipped with the following items:

- ▶ 4- or 8-port RS-232 to USB Converter
- ▶ Quick Installation Guide
- ▶ Documentation and Software CD-ROM
- ▶ A to B USB Cable (1.8m)
- ▶ Male DB62 to Male DB9 x 8 Cable (only for JetCon 2208)

1-3. Product Panel Layout



JetCon 2204 4-port RS-232 to USB Converter



JetCon 2208 8-port RS-232 to USB Converter

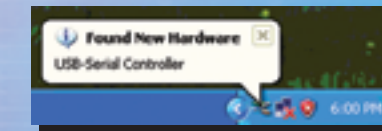
2. Installation

2-1. Installing Your JetCon 2200

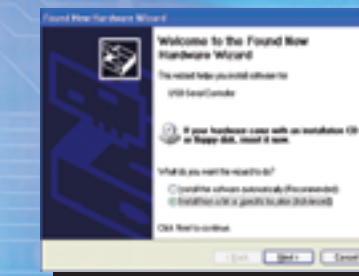
We use JetCon 2208 and Windows XP as an example to describe installation instructions.

1. Plug type A end of the USB cable into the USB port located on your PC or an available USB port on a USB hub, and plug type B end of the USB cable into the USB port on the JetCon 2208.

2. A Found New Hardware message will appear on your computer screen.



3. Then the installation wizard will automatically start. Select Install from a list or specific location (Advanced), and click on Next to continue.



4. Now insert the software CD-ROM into your computer. Select Search for the best driver in these locations, and check Search removable media (floppy, CD-ROM;K) and Include this location in the search. Use Browse button to select your CD-ROM drive. And then click on Next to continue.

